



JACKSON
CAST STONE

BUILT STEADFAST

FESTONATA PLANTER

| Cat# | OD/W | Top ID | Ht. | Base | Wt. |
|-----------|------|--------|-------|------|---------|
| JCS-86133 | 34" | 28" | 24.5" | 15" | 219 lbs |



Grey



Limestone



Graphite



Blue Mist



Conifer Green



Aqua Green



Sandstone



Cocoa



Terracotta



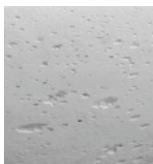
Desert Rose



FINISHES



Smooth Finish



Natural Finish

Choose your finish. The Smooth finish has been patched, blended, and sanded (additional charge). The Natural finish celebrates the art of imperfection with minor, natural pitting.

- Contemporary and traditional styles
- 6,000 PSI average mix design
- 10 colors, including grey and integrals
- 2 finishes and 2 sealer options
- Made in the U.S.A.

