



JACKSON
CAST STONE

BUILT STEADFAST

CUBE PLANTER

Cat#	OD/W	Top ID	Ht.	Base	Wt.
JCS-86453	10"	7.5"	10"	10"	52 lbs
JCS-86454	15"	12.5"	15"	15"	134 lbs
JCS-86455	21"	18"	21"	21"	278 lbs
JCS-86456	27"	24"	27"	27"	540 lbs



Grey



Limestone



Graphite



Blue Mist



Conifer Green



Aqua Green



Sandstone



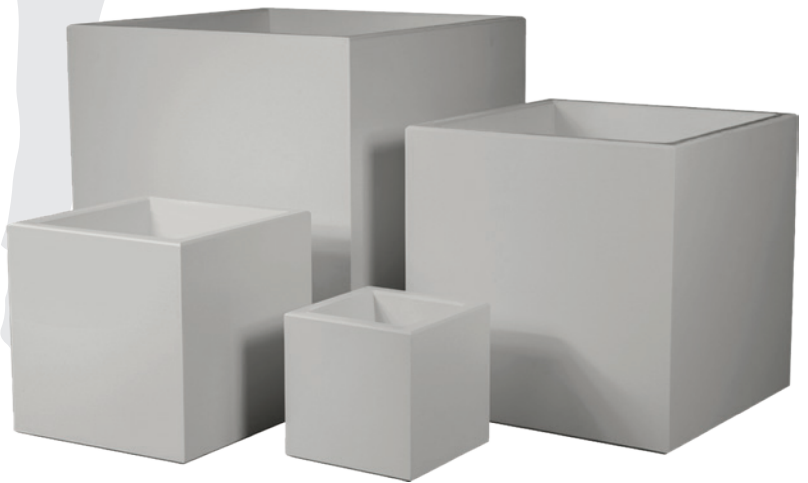
Cocoa



Terracotta



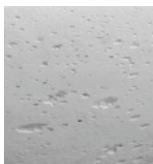
Desert Rose



FINISHES



Smooth Finish



Natural Finish

Choose your finish. The Smooth finish has been patched, blended, and sanded (additional charge). The Natural finish celebrates the art of imperfection with minor, natural pitting.

- Contemporary and traditional styles
- 6,000 PSI average mix design
- 10 colors, including grey and integrals
- 2 finishes and 2 sealer options
- Made in the U.S.A.

